



ELECTRO™

POWDERCOAT RANGE



The Electro™ range of powder coatings is formulated with super durable, UV resistant raw materials that come in a wide range of fashion colours that provide an ultra low sheen, silky, anodised look. Each Electro™ colour has been cleverly designed to subtly change in appearance, as light conditions alter throughout the day. The Electro™ range of powder coatings are suitable for use in a wide variety of climatic conditions from cold to hot, and humid to dry environments and is supported by 20 year durability warranty on pre-treated architectural aluminium when applied by a Dulux® Registered Applicator.

The Electro™ range of powder coatings have

been developed for use on architectural aluminium, including window and door frames, panel work, and other exterior metal features on commercial buildings.

Supported by a 20 year durability warranty on pre-treated architectural aluminium when applied by a Dulux® Registered Applicator

- Suitable for developments further than 10 metres from salt water
- No solvents or emissions
- Super durable polyester technology
- Excellent colour retention
- Smooth film appearance

See our Electro™ Colour card or check on line @ www.duluxpowdercoatings.co.nz

Taking care of your powder coated surfaces.

To comply with warranty requirements and to extend the effective life of powder coatings, a very simple regular maintenance program should be implemented.

As a general rule cleaning should take place every six months. In areas where pollutants are more prevalent such as beachfront houses and industrial or geothermal areas, then a cleaning program should be carried out on a more frequent basis ie. every one to three months. The atmospheric pollution, dirt, grime and airborne salt deposits can all accumulate over time and should be removed at regular intervals. Salt deposits especially can exacerbate the damaging effects of ultra violet light.

Three steps to cleaning your powder coating:

1. Carefully remove any loose deposits with a wet sponge.
2. Use a soft non abrasive brush or cloth and a

mild household detergent solution to remove dust, salt and other deposits.

3. Rinse off with clean fresh water.

Warning:

In some cases strong solvents are recommended for thinning various types of paints and also for cleaning up mastics and sealants. These are harmful to the extended life of the powder coated surface and should not be used for cleaning purposes.

It is important to note that the damage will not be visible immediately and may take up to 12 months to develop.

Paint splashes or sealants and mastics need to be removed before they cure. The following may be safely used for removal:

Methylated Spirits, Ethyl Alcohol, Isopropanol.

N.B. This colour card replaces all previous Duratec® Colour Cards.

DISCLAIMER: Any advice, recommendation, information, assistance or service provided by Dulux® Powder & Industrial Coatings in relation to goods manufactured by it or their use and application is given in good faith and is believed by Dulux® Powder & Industrial Coatings to be appropriate and reliable. However, any advice, recommendation, information, assistance or service provided by Dulux® Powder & Industrial Coatings is provided without liability or responsibility PROVIDED THAT the foregoing shall not exclude, limit, restrict or modify the right entitlements and remedies conferred upon any person or the liabilities imposed upon Dulux® Powder & Industrial Coatings by any condition or warranty implied by applicable legislation, regulation or other Government ordinance voiding or prohibiting such exclusion, limitation or modification. ©2017



Worth doing, worth Dulux®.



New Zealand

31B Hillside Road
Glenfield, Auckland 0627
PO Box 10 1886, N.S.M.C.
Auckland 0745
New Zealand
T + 64 9 441 8244
F + 64 9 441 8242
www.duluxpowdercoatings.co.nz

Australia

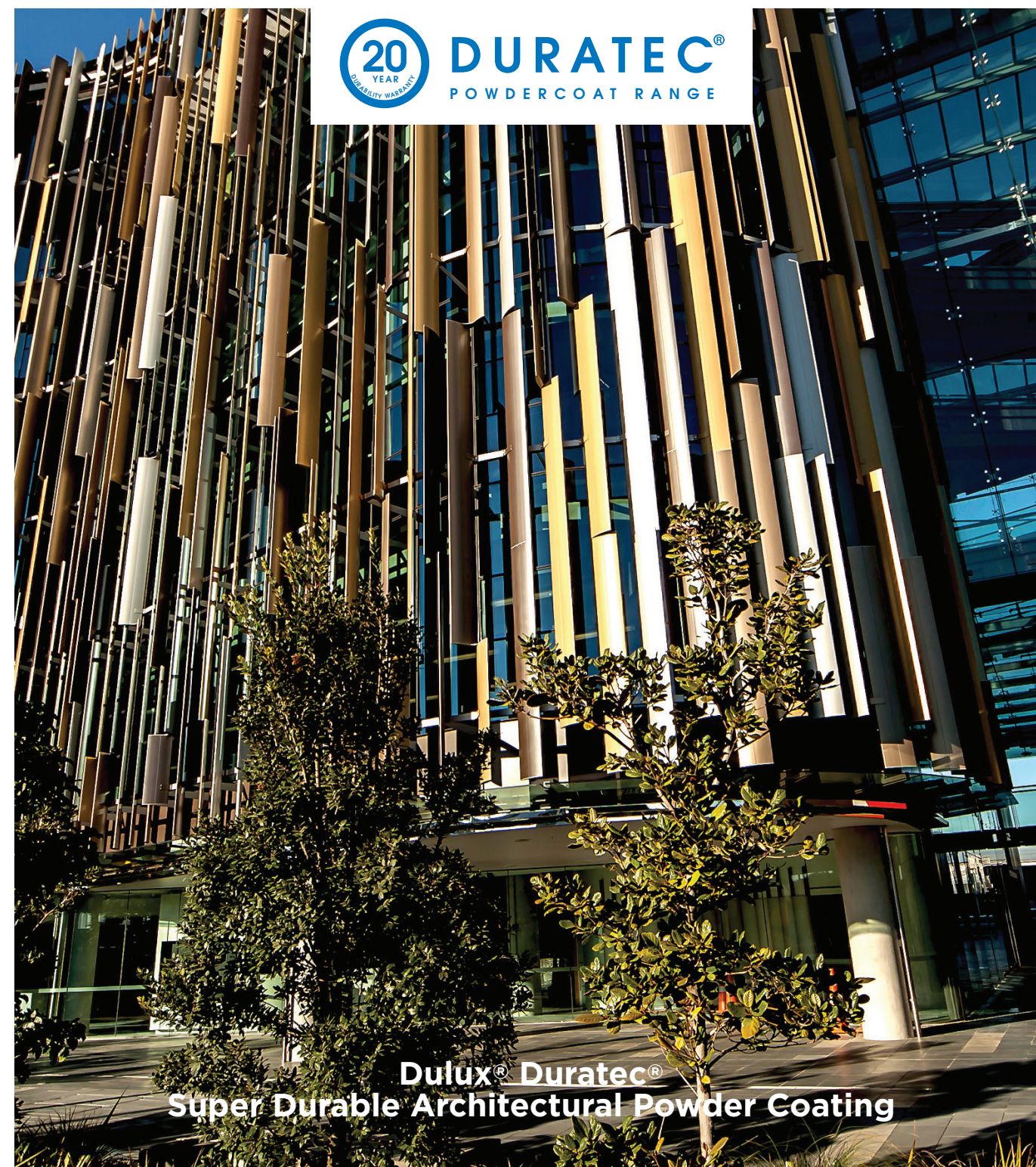
Dulux Powder &
Industrial Coatings
Australia
1-15 Pound Rd West
Dandenong South
Vic 3175
Australia
T + 61 3 8787 4500
Business Centre
F + 61 3 8787 4542

Dulux® Duratec® is manufactured by Dulux® Powder & Industrial Coatings under a quality management system certified as meeting the requirements of ISO9001.

Dulux, Worth doing, worth Dulux, the Sheepdog Device, Duralloy, Duratec, Metropolis, Intensity and Eternity are registered trade marks and Electro is a trade mark of DuluxGroup (Australia) Pty Ltd. © Copyright 2017



POWDER & INDUSTRIAL COATINGS



Dulux® Duratec®
Super Durable Architectural Powder Coating

Duratec® 9001274M
Matt Appliance White
LRV 88% RGB 240 241 239

Duratec® 90058851
Duratec® Arctic White
LRV 84% RGB 225 232 239

Duratec® 9003144M
Duratec® Matt Off White
LRV 73% RGB 232 223 200

Duratec® 9002068M
Duratec® Matt Titania
LRV 69% RGB 215 212 200

Duratec® 9007327M
Duratec® Matt Canvas Cloth
LRV 65% RGB 210 205 192

Duratec® 9003065M
Duratec® Matt Desert Sand
LRV 46% RGB 188 170 144

Duratec® 9009145M
Duratec® Matt Flax Pod
LRV 6.2% RGB 71 72 74

Duratec® 9007183K
Copper Metallic Kinetic
LRV 34% RGB 157 146 136

Duratec® 9008115K
Gunmetal Metallic Kinetic
LRV 10% RGB 76 75 71

Duratec® 9004007G
Intensity® Flame Gloss
LRV 14% RGB 181 44 39

Duratec® 9004008G
Intensity® Summer Gloss
LRV 27% RGB 229 87 31



POWDER & INDUSTRIAL COATINGS



Dulux® Duratec® premium high durability powder coating.

Duratec® is a super durable powder coating formulated with advanced polyester resin technology, utilising high performance pigments for colour production, designed for architectural aluminium products. Duratec® finds its principal use as a high quality, highly durable coating for aluminium joinery on high rise buildings, although it is also used in areas where the environment is more aggressive than normal.

The recommendations for product specification are as follows:-

Project	Environment	Project
Multistorey Prestigious	Marine	Fluo roset® FP
Multistorey Prestigious	Standard	Fluoroset® FP (or Duratec®/Electro™)
Multistorey Commercial or Industrial	Marine	Duratec®, Electro™ (or Fluoroset® FP)
Multistorey Commercial or Industrial	Standard	Duratec®, Electro™ (or Fluoroset® FP)
Multilevel Building under 3 Levels	Marine	Duratec®, Electro™ (or Fluoroset® FP)
Multilevel Building under 3 Levels	Standard	Duratec®, Electro™ (or Duralloy®)
Educational-School Single Level	Marine	Duratec®, Electro™ (or Fluoroset® FP)
Educational-School Single Level	Standard	Duralloy® (or Duratec®/Electro™)
Residential-Prestigious	Marine-Severe	Fluoroset® FP
Residential	Marine	Duratec®, Electro™ (or Fluoroset® FP)
Residential	Standard	Duralloy®



9007317K Duratec®
Metropolis® Silver Pearl Kinetic
LRV 47% RGB 174 174 172

9007160K Duratec®
Eternity® Silver Pearl Kinetic
LRV 38% RGB 153 157 159

90088396 Duratec®
Eternity® Pewter Pearl
LRV 27% RGB 127 131 131

9008068K Duratec®
Window Bronze Kinetic
LRV 10% RGB 79 73 69

9005063M
Duratec® Matt New Denim Blue
LRV 11% RGB 72 78 87

9007167M
Duratec® Matt Grey Friars
LRV 10% RGB 71 74 77

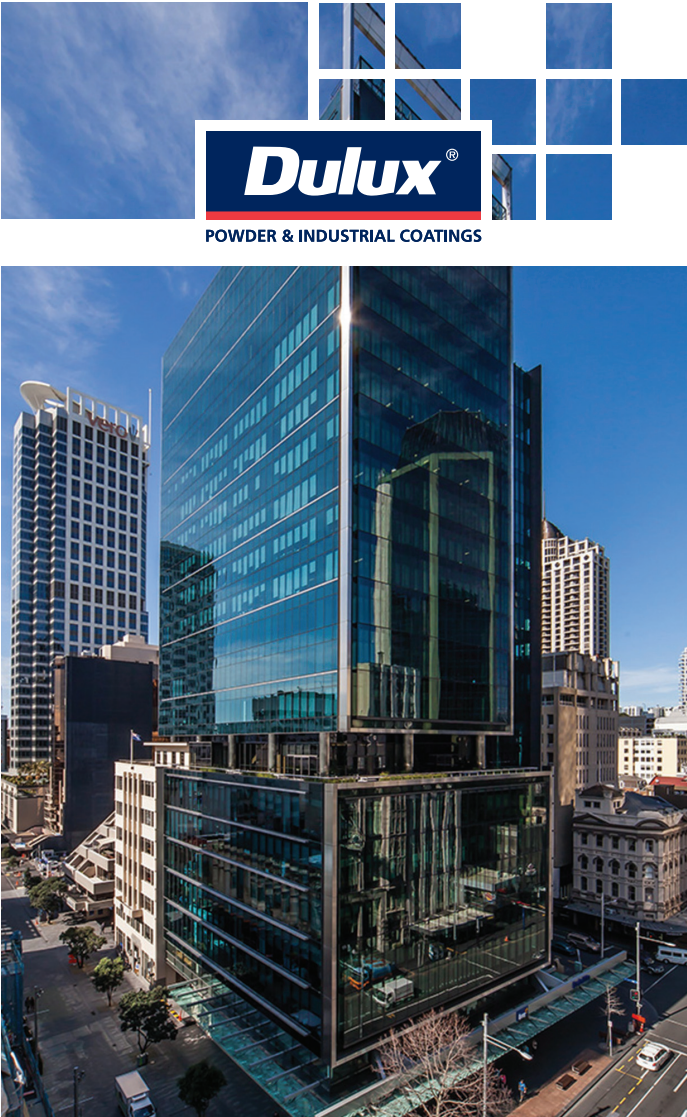
90097181
Duratec® Matt Black
LRV 04% RGB 43 43 44

9003059K Duratec®
Matt Champagne Kinetic
LRV 35% RGB 156 146 136

9007210K
Duratec® Oceans 12 Kinetic
LRV 28% RGB 126 136 127

9002004S
Duratec® Intensity® Moonlight
LRV 67% RGB 239 208 65

9002084G Duratec®
Intensity® Sunshine Gloss
LRV 52% RGB 233 174 53



More than 25 years coating history of Duratec® may be seen amongst the high rise buildings of the Auckland CBD. Duratec® may be seen on all sorts of buildings in all sorts of atmospheric environments. From Sydney to Singapore, Indonesia to Malaysia, fine examples of buildings with Duratec® coated joinery provide testament to Duratec's durability.


Duratec® is available in 33 colours held in stock in New Zealand. Duratec® may also be made to order in a wide range of colours, with most of the Duralloy® colours featured in the Duralloy® colour guide able to be formulated in Duratec® and manufactured for a specific project. Colours made to order do require minimum volumes to be manufactured.

Duratec® exceeds the international AAMA 2604 specification and may be supported by a performance warranty of 20 years film integrity and up to 15 years colour integrity.

We have now introduced the Intensity® range to our stock Duratec® Colours. This range is becoming increasingly popular for contrast trims, in hospitals and schools, where bright colours enhance the environment.

Please take the time to check an actual powder coated sample of the colour of your choice.

For technical reasons associated with colour reproduction the colours shown give only an indication of the shade. No guarantee can be given that they will exactly match the powder product.



POWDER & INDUSTRIAL COATINGS



9001173K Duratec®
Warm White Pearl Kinetic
LRV 88% RGB 239 240 230

9007335K
Duratec® Silver Star Kinetic
LRV 35% RGB 148 151 150

9007217M Duratec®
Matt Sandstone Grey
LRV 25% RGB 125 125 123

9008153K Duratec® Matt
Metropolis® Electric Cow Kinetic
LRV 09% RGB 71 70 68

9008109M
Duratec® Matt Ironsand
LRV 08% RGB 65 63 61

9009100K Duratec®
Metropolis® Coal Dust Kinetic
LRV 08% RGB 61 63 63

9009081M
Duratec® Matt Charcoal
LRV 08% RGB 61 64 67

9007208K Duratec®
St Elmos Fire Kinetic
LRV 34% RGB 145 147 148

9007214K
Duratec® Platypus Kinetic
LRV 30% RGB 141 137 131

9005011G Duratec®
Intensity® Reef Gloss
LRV 18% RGB 40 108 181

9006167S
Duratec® Intensity® Leaf
LRV 24% RGB 74 138 64